

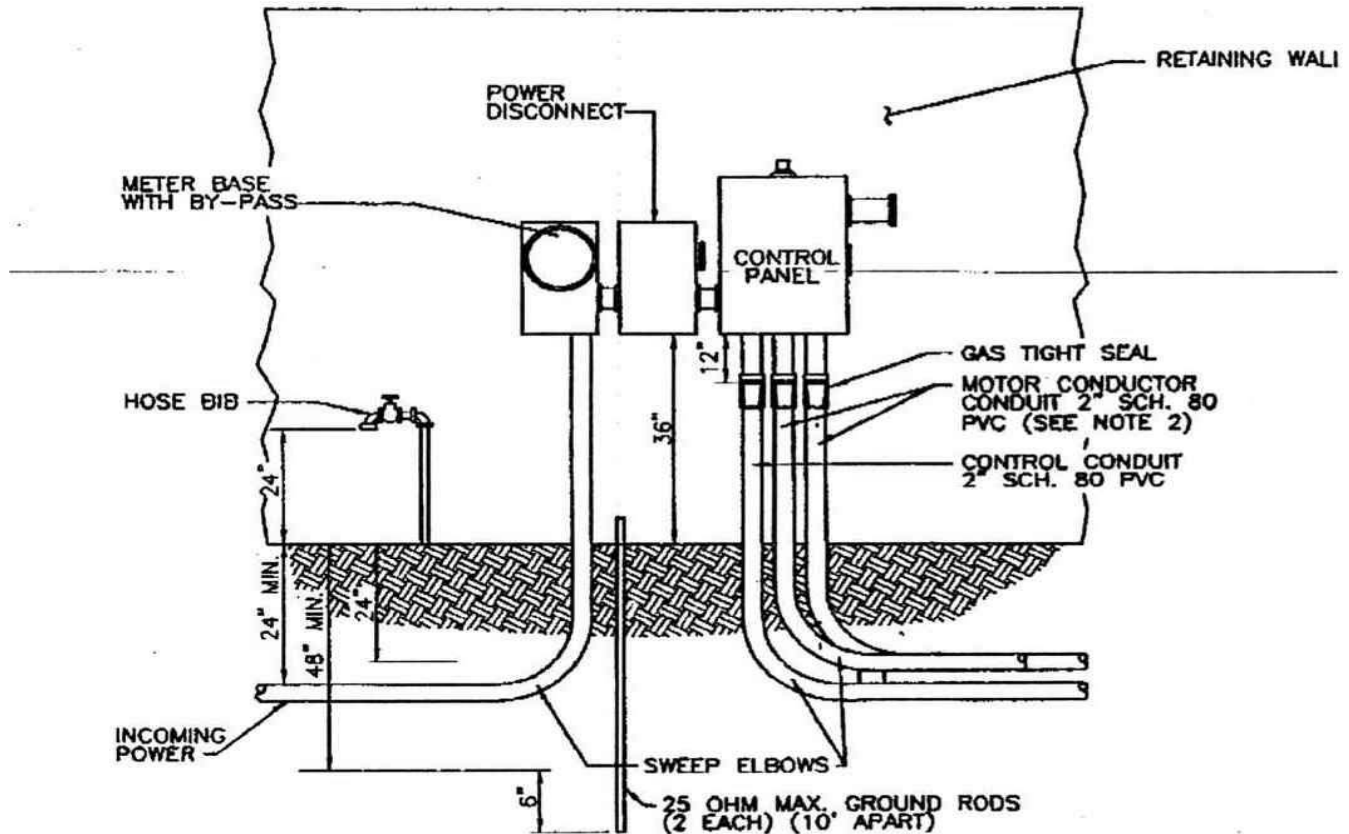
SPECIALIZED PUMP COMPANY, INC.

"IN BUSINESS SINCE 1972"

P.O. Box 3805 HOLLYWOOD, FLORIDA 33083 PHONE (954) 967-2071 FAX (954) 967-2074

WWW.SPECIALIZEDPUMP.COM

Specialized Pump Company Lift Station Control Panel Installation Detail



NOTES:

1. DRAWING IS SHOWN FOR 230 VOLT POWER SUPPLY. THE LOCATION OF METER AND MAIN POWER DISCONNECT SHALL BE REVERSED FOR 480 VOLT SUPPLY.
2. WHEN TWO (2) SEPARATE CONDUCTOR-TYPE MOTORS ARE USED, CONDUIT SHALL BE INCREASED TO 3\".
3. POWER SUPPLY SHALL BE UNDERGROUND ON THE LIFT STATION SITE AND SHALL BE 3 PHASE FROM A 3 PHASE SOURCE ONLY.

LIFT STATION CONTROL PANEL INSTALLATION DETAIL