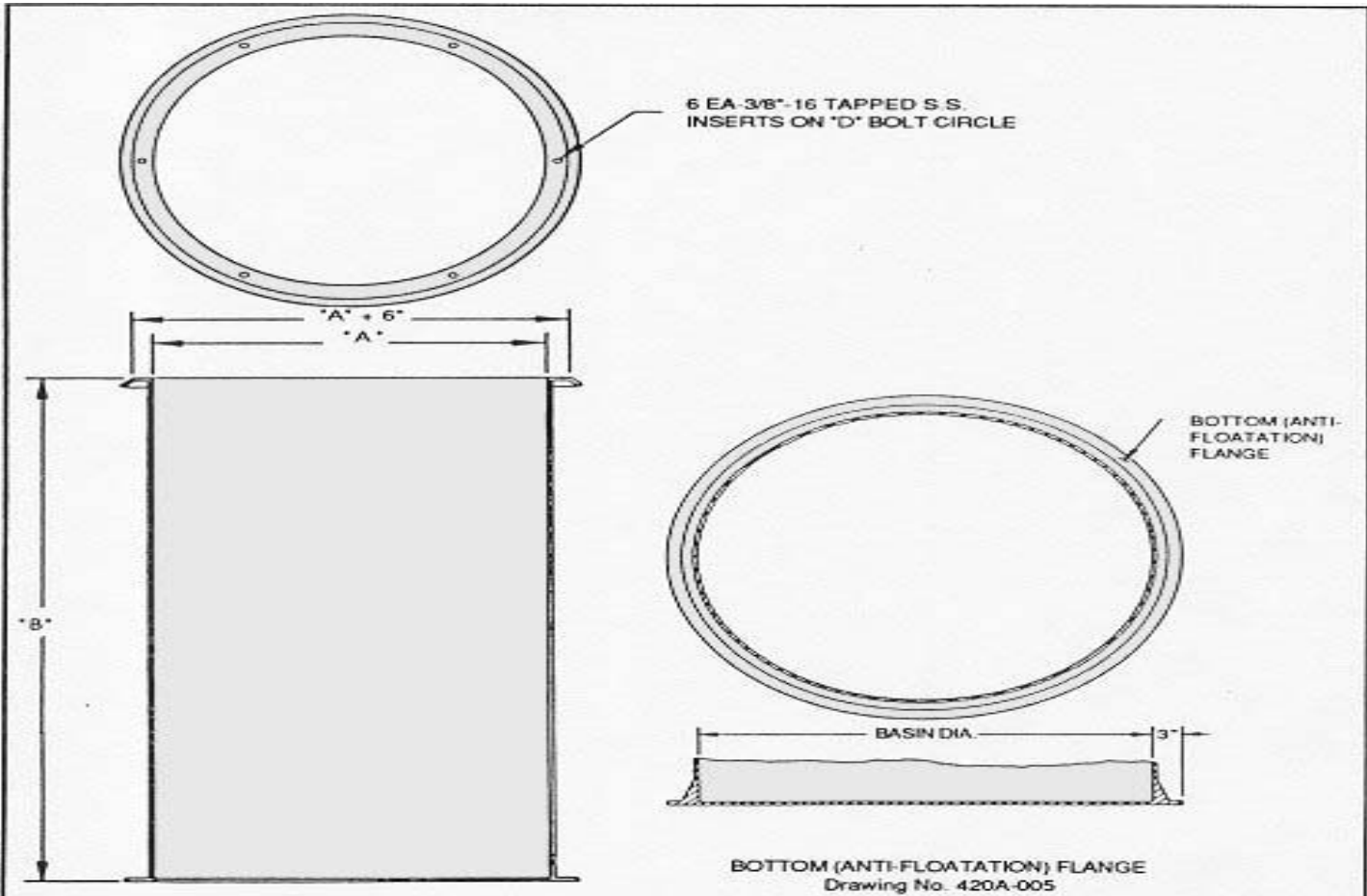


SPECIALIZED PUMP COMPANY, INC.

"IN BUSINESS SINCE 1972"

P.O. Box 3805 HOLLYWOOD, FLORIDA 33083 PHONE (954) 967-2071 FAX (954) 967-2074

WWW.SPECIALIZEDPUMP.COM



BOTTOM (ANTI-FLOATATION) FLANGE
Drawing No. 420A-005

DIMENSIONAL DATA		
"A"	"B"	"D"
24"	AS REQUIRED	26 1/2"
30"		32 1/2"
36"		38 1/2"
42"		44 1/2"
48"		51"
54"		57"
60"		63"
72"		75"

NOTE:
WETWELLS (OF THE DIAMETERS SHOWN ON THIS DRAWING) THAT ARE OVER 10'0" DEEP (OVER 12'0" ON 36" DIA. AND 42" DIA.) SHALL BE FURNISHED WITH A REINFORCING RIB. OUTSIDE DIAMETER OF THE RIB SHALL BE APPROXIMATELY 6" LARGER THAN THE INSIDE DIAMETER OF THE WETWELL.

SPECIALIZED PUMP CO., INC.	TITLE	STRAIGHT WALL BASIN
	PROJECT	JOB NO.
	CUSTOMER	P.O. NO.
		DWG. NO. 404S