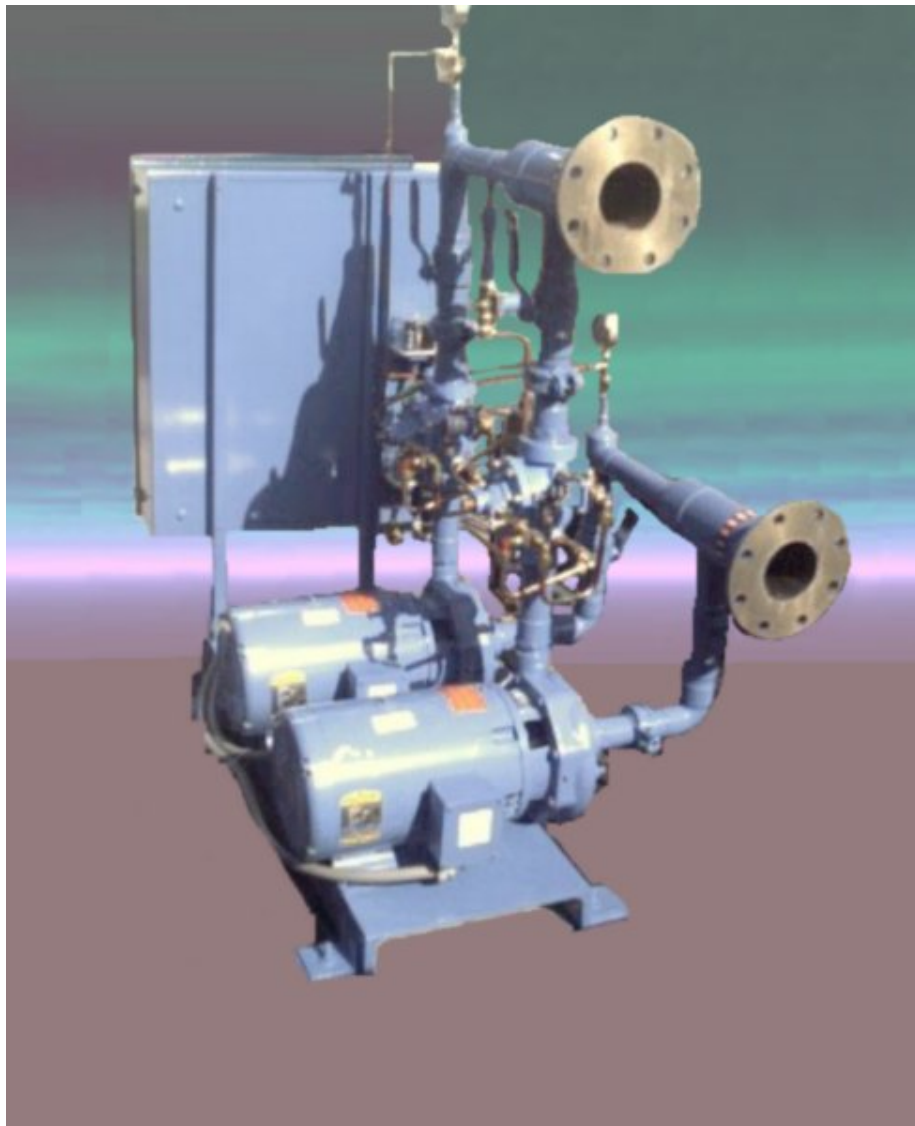


SPECIALIZED PUMP COMPANY INC.



Catalog

SPECIALIZED PUMP COMPANY INC.

2005 Catalog

© Specialized Pump Company Inc.
P. O. Box 3805
Hollywood, Florida 33083
Phone 954.967.2071 • Fax 954.967.2074

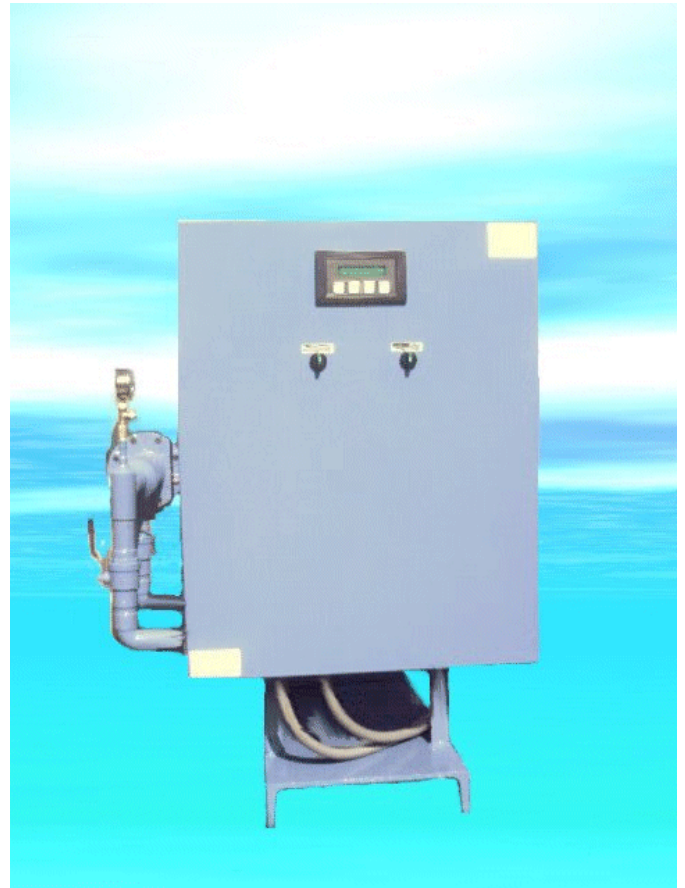
Email: SpecPump@Bellsouth.Net



Specialized Pump Company

Specialized Pump Company is a family owned and operated business. Started in 1972 by Joe and Larry Ault, the company has been providing quality pumps and control systems to the busy South Florida construction market. With over 30 years of experience in system design, you will find their systems in some of the Florida's and the Caribbean's biggest hotels and condos.

- **Domestic Water Booster Systems** - Custom designed systems from 1 to 6 pumps.
- **Roto Float Systems** - Custom designed Sump, Sanitary, Elevator, Storm or Sewage systems
- **Remote Alarm Consoles** – Alarm Monitors for Security Guard or Building Engineer
- **Panel Up-Grades** – Replaces your controls and pressure switches for a microprocessor and a transducer for a more effective system
- **Re-Circulator Pump Systems** - Custom designed systems
- **PRV Valve Stations** -Custom designed systems
- **A full line of System Accessories**
 - Isolators
 - Base Springs
 - Tank and Basins
 - Lids and Covers
 - Strainers
 - Slide Rails



Tell us your specifications and we will design the right system to fit your needs.. So if you are replacing your current system to a more efficient system or if you are installing a brand new system, Give us a call and we can design a system that best fits your requirements.

Contact Information

Contact us by Phone: 954 9672071

Contact us by Fax: 954 9672074

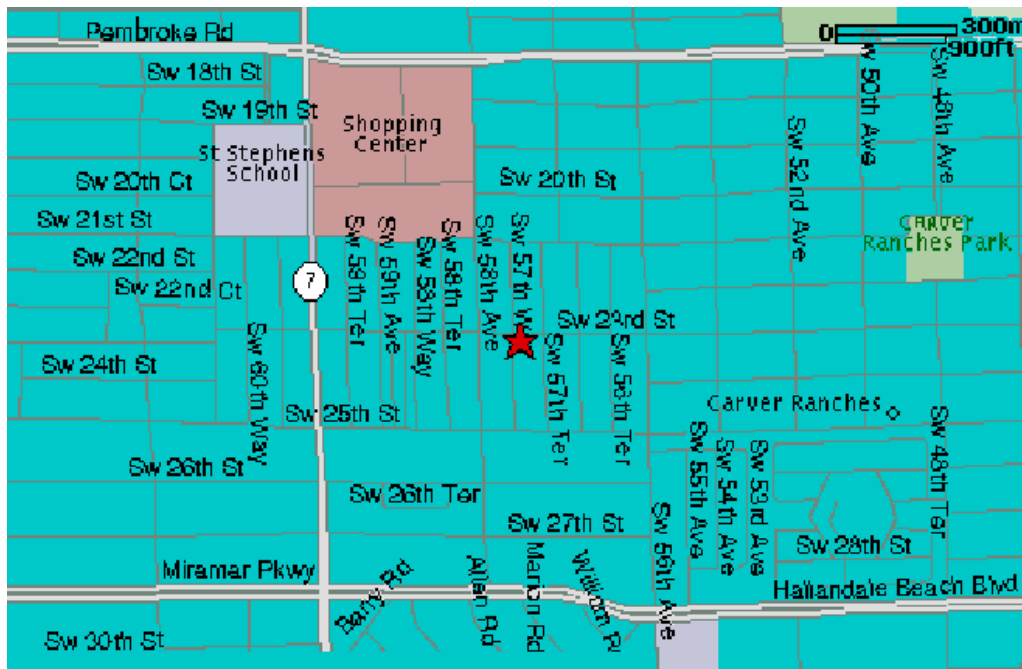
Contact us by Email: specpump@bellsouth.net

Mailing Address : Specialized Pump Company, Inc
PO Box 3805
Hollywood, FL 33083-3805

Coming in 2005 Find us on the Web at:
WWW.SpecializedPump.com

Physical Location – Centrally Located in Broward County at:

2311 Southwest 57th Way
Hollywood, Florida 33023



Domestic Systems

Specialized Pump Company System Features:

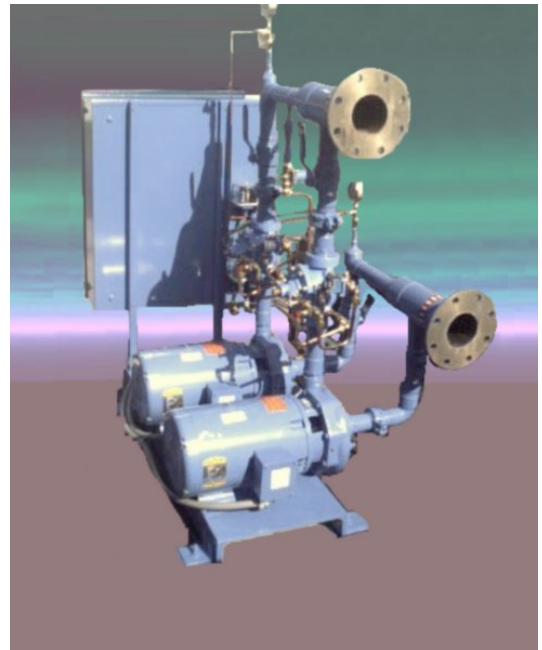
Choice of Systems:

Constant Speed – System Utilizes Pressure Reducing Valves on each Pump to maintain constant pressure

Variable Speed – System Utilizes Variable Speed Drives on each Pump to maintain constant pressure

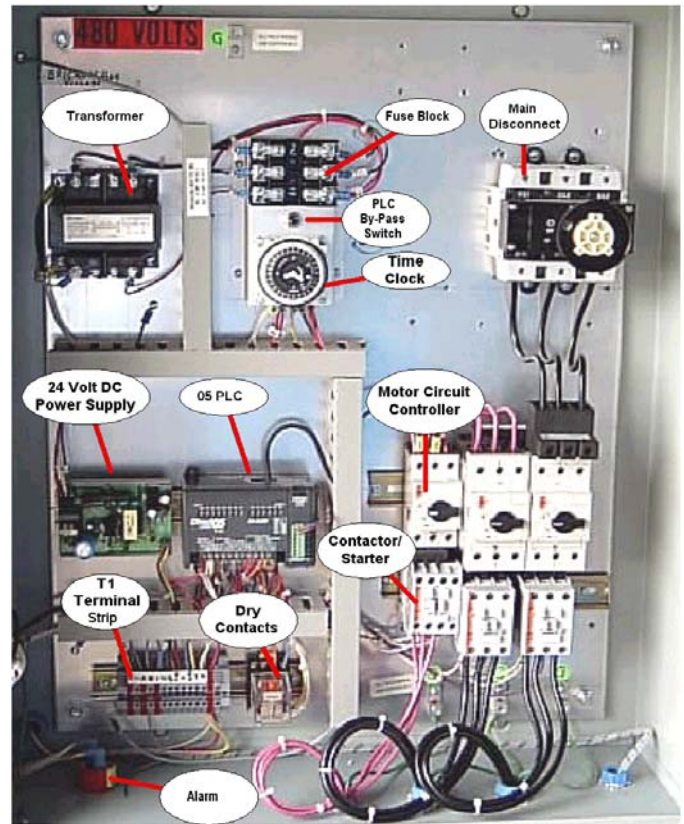
Hybrid Systems – Combination of the two systems. Usually a common variable speed drive on the lead pump while the lag pumps are constant speed with pressure reducing valves.

- All Pumps Are Mounted On A Steel Base.
- The entire assembly will have two coats of top grade marine epoxy paint.
- Complete electric and hydraulic tests to be performed at the factory
- The System is complete with all necessary shut off valves, gauges, and flanges, so repairs and maintenance can easily be completed.
- Control Panels equipped with the Programmable Controller feature:
 - Digital message/operator interface and display, for all functions and alarms, Display module is UL approved and NEMA 4X rated.
 - Full system trouble shooting guide, and Help Center with a 24 hour Emergency Contact Phone number within the display.
- Customer Programmable Features, Pump Alternation, Run Times and Time Delays.
- Illuminated Hand-Off-Auto Switches for each pump
- Underwriters Labs (UL) Listed and approved (E130708)



The Specialized Pump Company Control Panel Feature:

- Circuit Breakers or Motor Circuit Controllers
- Magnetic Contactors With Adjustable Thermo Overloads
- Programmable Minimum Run Time Delays
- Programmable Lag Run Times
- Hand-Off-Automatic Selector Switches
- Pump Run Pilot Lights For Each Pump
- 7 Day Programmable Time Clock
- Fused Transformer With 115 VAC Fused Secondary
- Main Power Terminal Block
- U.L. Listed Controller.
- Steel Control Panel Enclosure is NEMA 3R rated and UL approved

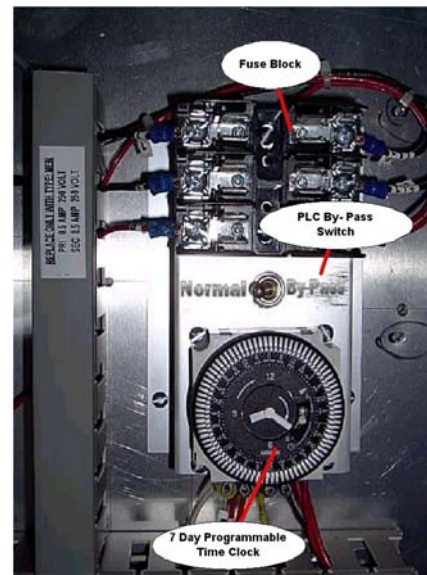


Protection Devices

- Motor Fault and Overload
- Control Fault and Overload
- Mechanical Pump Over Temperature Protection
- Transient Voltage Suppressor (TVS)
- Fused 110 Control Circuit

Operator Controls Feature:

- Illuminated Hand-Off-Automatic Switches
- PLC By Pass Switch
- Time Clock for Pump Alternation
- Alarm



- Displays with Touch Key - PLC equipped Control Panels will come with a Digital Display Operator Interface with four touch keys. Each key is designated a specific function or functions.



HELP–Displays the On board Help Screens When this key is pressed during normal operation the software Version and Job Number will appear in the display window. When the key is pressed during an alarm situation a help message for that particular alarm is displayed

EMT–Press this key to display the elapsed Pump Run Time. The display will cycle through the elapsed time reading for each pump in the system before returning to the Standard Display Sequence.

GMP– Will Alternate the Display To Show Either Gallons per minute (GPM) or Pressure per Square Inch (PSI) the output of selected pump in the gallons per minute (G.P.M.)format. If the System has been ordered with the GPM Option

Reset–when pressed the key will reset the system after an alarm condition. If the alarm condition is still present, the key will only silence the alarm but will not clear the alarm condition..



Pump Sequencing

Pump sequencing in all Systems is determined by number of pumps in a system and by the output of those pumps. The PLC is programmed to determine which pumps are cycled on at a particular time to meet the buildings requirements in the most efficient manner possible. Depending on the System configuration the program can use up to seven lag functions to provide a constant water pressure to the building. The PLC constantly monitors the flow rate or Pressure; it will then determine which pump or combination of pumps will be activated to meet the demand. The PLC takes in a number of factors to determine the most economical and efficient to use the pumps to meet the demand.

DOMESTIC BOOSTER SYSTEM STANDARD FEATURES

- **Audible Alarm** with silencer-A horn will acknowledge any alarm condition.
- **Dry Contracts** for remote monitoring of system alarms.*
- **Low City Pressure** (Std All) If City Pressure falls below a minimum safe pressure the system shuts off the pumps and sounds an alarm. On systems with PLC controls, the plc will monitor the pressure and if the pressure returns to a safe state within two minutes the system will automatically restart if it returns to a safe state after two minutes a manual restart is required
- Multiple Pump Control Systems utilize a Programmable Logic Controller (PLC) Since the PLC uses a transducer to continuously monitors the building's water pressure. This feature allows us to incorporate features previously listed as options as standard features

Elapsed Time Meter

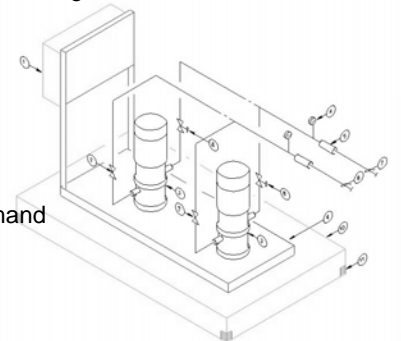
High Flow/Flow Switch-Direct acting flow switch signals high flow demand. After a (adj.) time delay the high flow lag pump is sequenced on. A minimum run (adj.) time delay holds in lag pump against varying flow fluctuations. Flow switch will de-activate lag pump upon return to normal flow conditions

High Flow/Pressure Switch-H.F.P. pressure switch signals high flow demand at the point that the lead pumps capacity is exceeded. After a (adj.) time delay, the lag pump is sequenced on. A minimum run (adj.)time delay holds in the lag pump against flow demand fluctuations. Pressure switch will de-activate lag pump.

Programmable Pump Sequence With Digital Display-The programmable meter will select the proper combinations of pumps to match varying flow demands in the most efficient sequencing

DOMESTIC BOOSTER SYSTEM OPTIONAL FEATURES

- **Emergency Generator Transfer Connection**-Emergency Generator Power Connection and start of selected Pump
- **Elapsed Time Meter** -Elapsed Time Meter Simplex Systems Only
- **Digital Flow Indicator**-A paddle wheel flow transducer produces a frequency proportional to the flow rate. The LCD display will provide G.P.M. flow readout
- **High City Pressure normal shutdown**-H.C.P. pressure switch signals city pressure is above buildings minimum pressure requirements. If signal exceeds 20 seconds (adj.) the lead pump is deactivated. A displayed message will indicate this condition. Upon a pressure drop to an unacceptable level, the lead pump is restarted. Required with Option 5
- **High System Pressure** (Cutout)-pressure switch signals system pressure has exceeded safe limit (adjustable). All pumps are disabled. A displayed message will indicate this condition. A manual reset will restart system
- **Low Supply Level(cutout)**-Remote sensor, signals of low level in cistern or reservoir. All pumps are disabled. A displayed message will indicate this condition. Controller rests automatically upon return to safe level.
- **Phase Monitor P.M.**-Upon phase loss, low voltage, and high voltage or phase regeneration, Monitor will disable all motors. Monitor will reset automatically .L.E.D. monitors normal mode
- **Main Disconnect**-Fused or fused-fused rotary mechanism. NEMA rated with external through the door, lockable handle.
- **Main Breaker w/External Main Handle**
- **Pump Circuit Breakers with Thru Door Handles**
- **Modem** – Connects your System to a remote computer via a phone line.
- **Variable Frequency Drive** – Allows pumps speed up or slow down according to demand
- **Soft Start Starters** – Ramps pumps up to speed slowly



- **Digital Flow Indicator**-A paddle wheel flow transducer produces a frequency proportional to the flow rate. The LCD display will provide G.P.M. flow readout.
- **Discharge Valve**
- **Flanged Isolators** (Rubber Sphere)-Flanged rubber sphere isolators for suction and discharge manifolds to further reduce normal transmitted vibration. See accessories option section.
- **Full Size By Pass**-A silent check valve is installed between the suction and discharge manifolds .During periods when city supplied pressure is adequate to satisfy building requirements, pump and pressure reducing valves are bypassed providing a path of least friction loss.(Recommended along with option 04)
- **Gauge Board** (panel mounted)-Industrial grade, 3½-diameter back flange mount, back Connection. Gauge board panel mounted. (Two or three gauges).
- **High System Pressure** (Cutout)-pressure switch signals system pressure has exceeded safe limit (adjustable). All pumps are disabled. A displayed message will indicate this condition. A manual reset will restart system
- **Hydro-Pneumatic Bladder Tank**-Mounted and piped on pump system/remote-roof/roof-roof. Select capacity and maximum pressure range.
- **Inertia Base Springs**-Steel spring mountings with ribbed neoprene skid pads and leveling bolts to be installed under/in concrete in inertia absorbing base. See accessories option section.
- **No Flow System Shut Down**(normal)-Controller constantly monitors pressure and flow. When a "true" No Flow signal is received, the lead pump is de-activated. A message is displayed indicating normal system shutdown. During shutdown, the hydro-pneumatic bladder tank meet slow flow requirements. Lead pump will restart upon high flow or a drop in normal maintained system pressure. See Option 07
- **Temp Purge Solenoids Each Pump**-Temperature Sensor and Purge Solenoids for each Pump
- **Temp Purge** for each Pump-Temperature Purge for each Pump-Mechanical Type
- **Piping Choices**
 - Copper**-Pump will be piped in copper type L/type K. See pressure ratings-product specifications
 - Galvanized**-Pumps will be piped in galvanized steel schedule 40. See pressure ratings product specifications.
 - P.V.C.**-Pumps will be piped In PVC schedule 80. See pressure ratings products specifications.
 - Stainless Steel**-Pumps will be piped in Stainless Steel schedule 304/316. See pressure ratings product specifications.
 - Steel**-Pumps will be piped in Steel. See pressure ratings product specifications



Domestic System Warranty

At time of Delivery, Specialized Pump Company, Inc. will warrant each water pumping system against defects in materials and workmanship under normal use and service for a period of One (1) year.

Each pre-piped S.P.E.C. electrical control panel will be covered by a One (1) year warranty on all internal electrical controls.

Upgrade Panel

Control Panel Upgrade

Specialized Pump is proud to announce a new addition to our product line. The Digital Upgrade is a cost effective alternative to replacing your entire booster system. The Digital Upgrade utilizes your existing starters and breakers/fuses, and pumps.

The Digital Upgrade incorporates a micro-processor and software specific to your pump configuration resulting in the following benefits:

- Pumps stage as needed as per demand determine by your pump configuration
- Replaces Slow reacting Pressure Switches with a fast response Transducer
- Protect against low city pressure (high system pressure available)
- Lead pump fail,
- High flow-start of standby
- Remote alarm annunciation.

The Digital Upgrade has a built in information message center which acts like an “on-board” maintenance manual prompting you through the correct steps for the current situation. The Message Center displays:

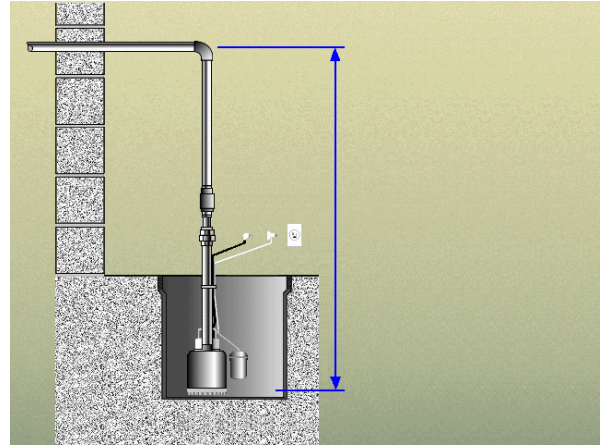
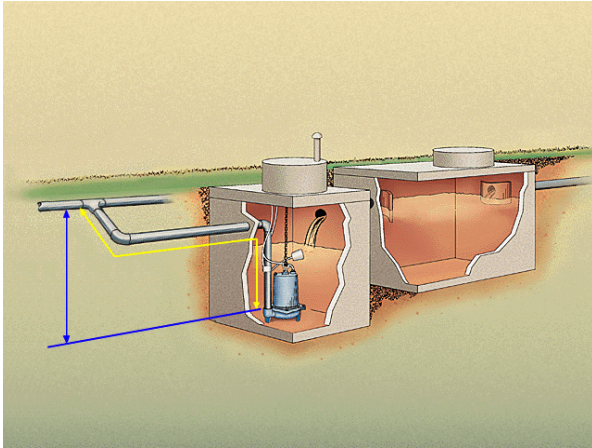
- Current Status
- Problem Status (alarms)
- Problem resolutions - how to correct it
- System Restart Instructions
- Records and Displays previous error counts



This complete unit with individual (lighted) Hand-Off-Auto selector switches is in a Nema 3R steel enclosure. 12" (W) X 12" (L) X 6" (H).

The Digital Upgrade is available for Duplex Triplex and Quad Systems

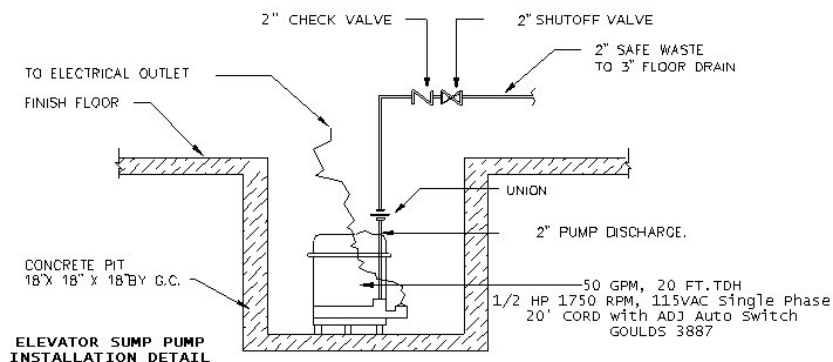
Roto-Float Line of Products



For Sump, Storm, Elevator, Sanitary or Sewage Systems

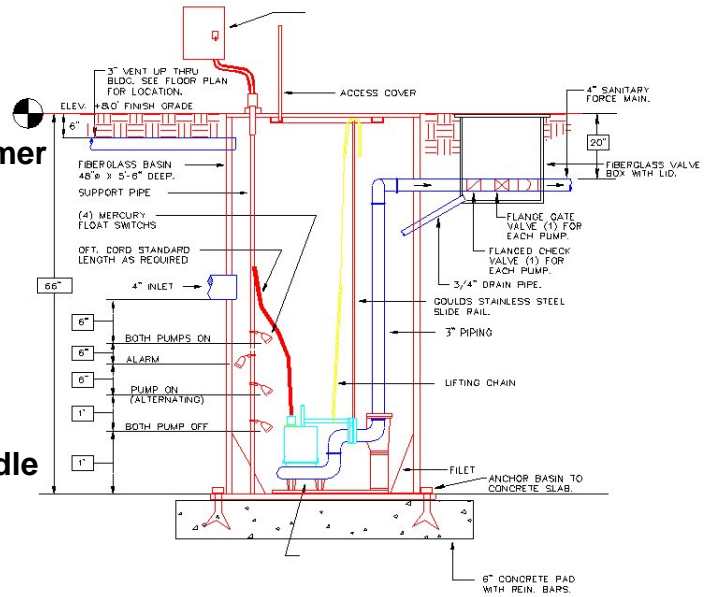
Roto-Float System Standard Features

- **Audible Alarm** - A horn will acknowledge any alarm condition
- **External Silencer Button** - External Nema 4X silencer button allows the Light and horn to be reset without opening the panel
- **Warning Light** - Red Lexan light on the top of the control panel will come on in conjunction with the warning alarm.
- **U.L. Label** - All Specialized Pump Control panels are UL approved



Roto-Float System Option List

- Elapsed Time Meter - Elapsed Time Meter Display for Each Pump
- Surge Protector
- Mechanical Seal Failure
- Phase Monitor P.M\
- Lightning Arrestor
- Duplex Receptacle 110VAC
- Duplex Receptacle 110VAC with Transformer
- Dry Contacts
- Indicating Lights (Level)
- Inner Door
- Enclosure – Fiberglass
- Enclosure – Aluminum
- Enclosure - Stainless Steel
- Main Breaker
- Main Breaker w/ External Disconnect Handle
- Main Disconnect
- Generator Receptacles w/Breaker
- Generator Receptacles
- Intrinsically Safe
- Heat Sensor (Terminals)
- Power On Light
- Basin - Fiberglass
- Basin – Poly
- Basin Lids
- Slide Rails
- Guide Pipes
- Floats
- Float Holders
- Lifting Mechanisms
- Valve Boxes
- Inverts
- Vents
- Discharge



Warranty

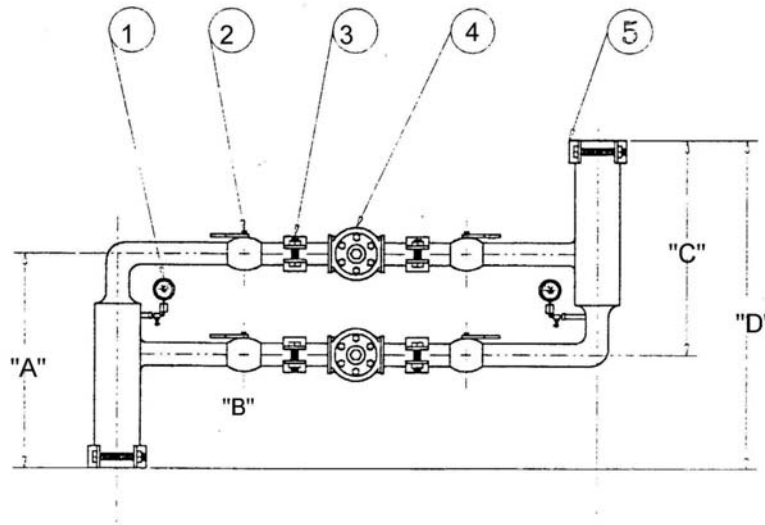
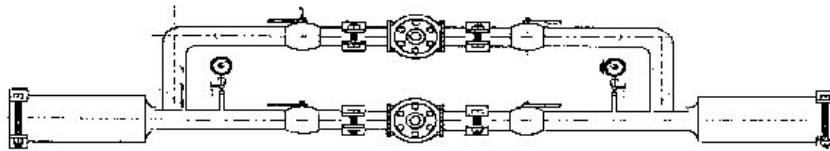
At time of sale, Specialized Pump Company, Inc. will warrant each water pumping system against defects in materials and workmanship under normal use and service for a period of One (1) year.

Each pre-piped S.P.E.C. electrical control panel will be covered by a One (1) year warranty on all internal electrical controls.

Valve Stations

Dual Low Zone Pressure Reducing Valve Station

Valve Stations are custom built to suit your requirements: Straight, Angled, Vic or Flange



Each Station includes: Pressure Gauge, Shut-Off Valve, Pressure Reducing Valves

Remote Alarm Console

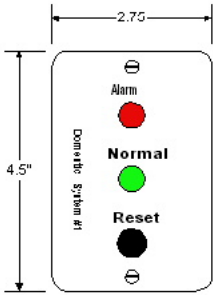
Remote Alarm Console

This Remote Monitor is the size of a light switch and can be flush mounted in a wall, Console monitor pump control panel operation, Green light for Normal Operation, Red Light for Alarm Conditions. Includes remote reset switch. Installation requires

Mini Remote Alarm Console

Remote Alarm Console Features

- > 1. Stainless Steel Wall Plate Mounting
- > 2. Normal Operation Light
- > 3. Alarm Light
- > 4. Audiable Alarm
- > 5. Reset Button
- > 6. Low Voltage Connections 24VDC
- > 7. Four Wire connection to System



Wall Plate

